

Coming Soon – Great Quality Office Suites Available at a Competitive Rent With Ample Parking

159m² to 833m²
(1,707ft² to 8,960ft²)

- Office suites under refurbishment to a very good standard
- Excellent car parking facilities
- Flexible terms available
- Competitive rents
- 24/7 access
- Located in close proximity to Nottingham City Centre
- Coming soon – practical completion in Q1 2025



TO LET



Location



Gallery



Video



Contact



Location

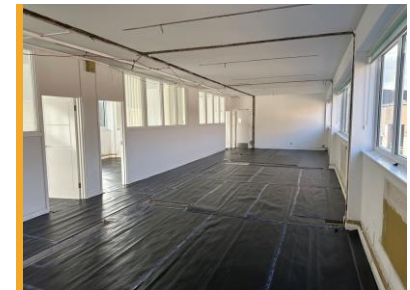
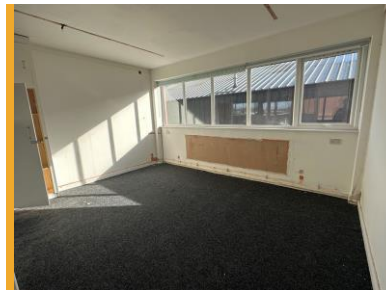
The property is located on Private Road No.3, situated on the well-established Colwick Industrial Estate located within easy access from the A52 and the A46, approximately 4 miles west of Nottingham City Centre.

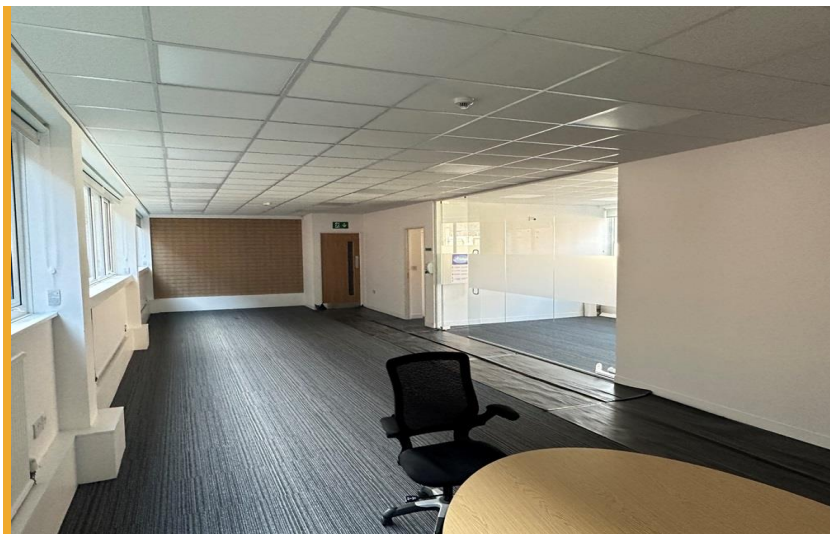
Situated opposite the new Sainsbury's and MKM Building Merchants, the property is easily accessible and located in the ever-developing area of Colwick. The property also benefits from nearby transport links such as Netherfield Train Station and local bus routes.

Description

The property comprises a self-contained office with four potential suites available just off a main communal area. The suites are undergoing a refurbishment and are available individually or on a floor by floor basis. The office suites benefit from the following specification.

- Share WC facilities
- Communal/reception area
- A mixture of open plan and cellular floor plates throughout
- Trunking incorporating Cat 5 cabling
- Grey carpet tiles throughout
- Kitchen facilities
- LED lighting
- Ample car parking to the front of the property
- Currently undergoing a high quality refurbishment
- 24/7 access





Accommodation

Suite	m ²	ft ²
Suite 1	232	2,492
Suite 2	159	1,707
Suite 3	241	2,597
Suite 4	201	2,164
Total	833	8,960

(This information is given for guidance purposes only.)

EPC

An EPC rating will be available for the suites once the refurbishment has been completed.

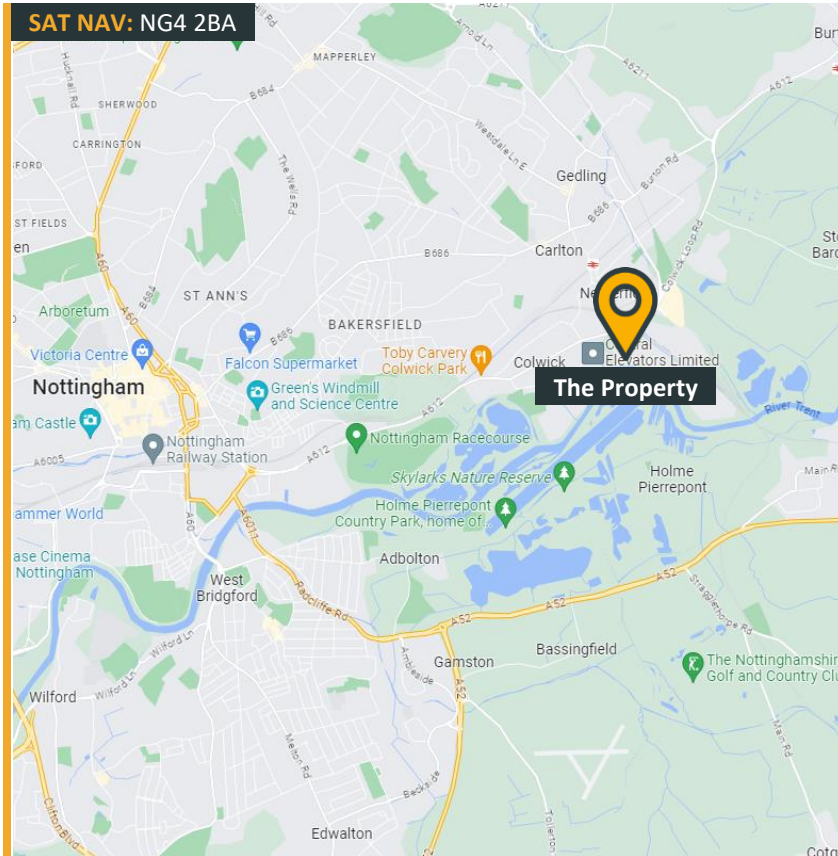
Business Rates

The Business Rates will be reassessed once the units have undergone the refurbishment.

(This information is for guidance only and all parties should check themselves with the local billing authority.)

Service Charge

A service charge will be levied to cover the upkeep and maintenance of the common areas of the property. The current estimated service charge figure is £2 per ft². Further information is available from the agent.



Rent

The suites are available on a licence agreement and we are quoting a rent of:

£8.00 per ft² per annum exclusive

VAT

VAT is applicable on the rent and other costs falling under the lease at the standard rate.

Further Information

For further information or to arrange a viewing, please call or click on the emails or website below:-

Amy Howard

07887 787 894

amy.howard@fhp.co.uk

Jamie Gilbertson

07747 665 941

jamie.gilbertson@fhp.co.uk

Or contact our joint agent **JLL** on **0115 908 2120**.



Fisher Hargreaves Proctor Ltd.
10 Oxford Street
Nottingham, NG1 5BG

fhp.co.uk

10/07/2024